

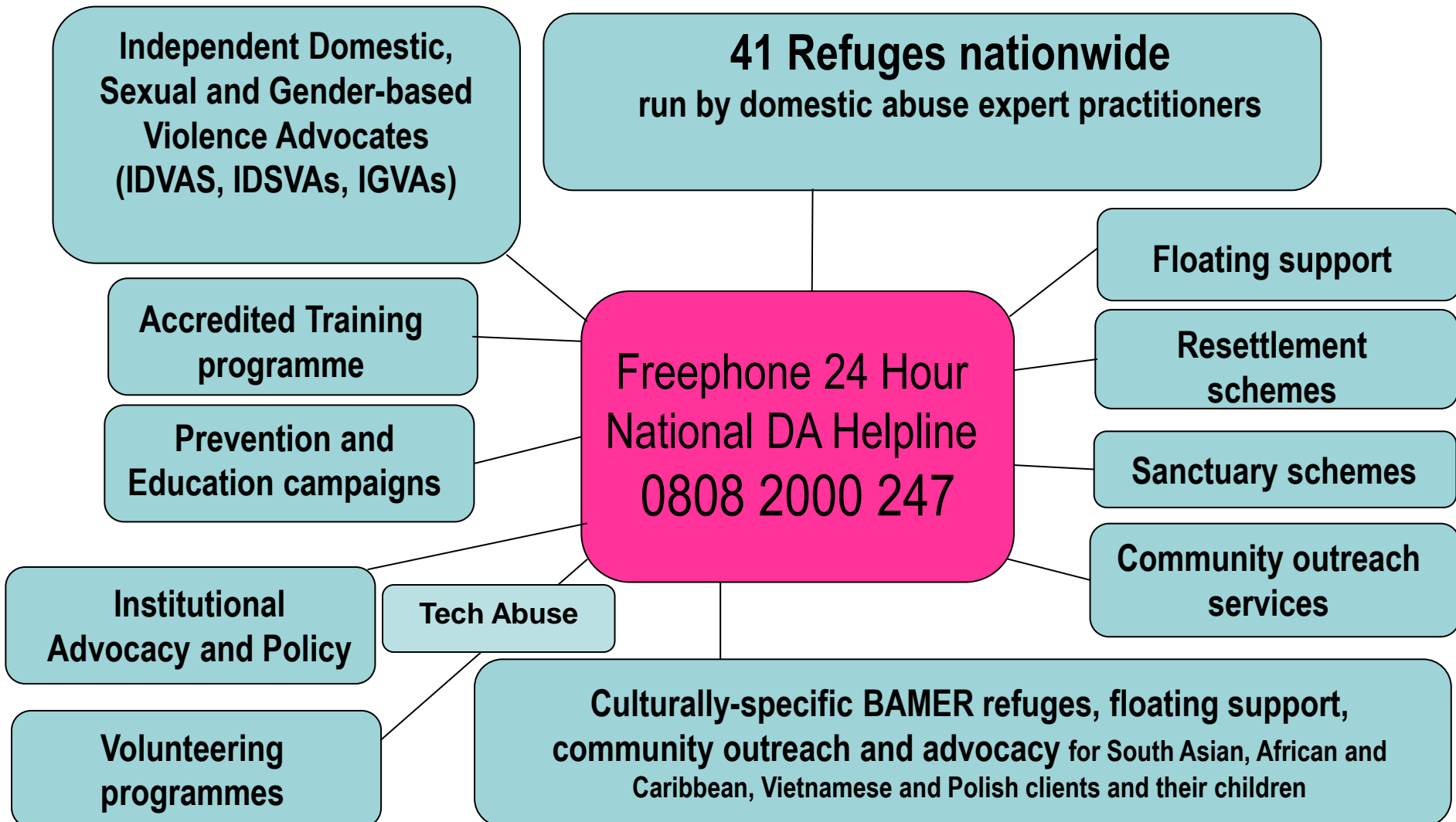
Introduction to Refuge

Refuge Services



Shagufta Naseem
Deputy Service Manager, Derby City

Experience: Network of services



Services Offered in Derby



- We have 25 bedspaces in total
- These bedspaces are spread across 3 sites.
- 1 of the sites is a South Asian Specialist Refuge.
- Within the service the staff speak, Urdu, Punjabi Bengali and Hindi
- Staff are skilled and experienced in dealing with HBV/FM and immigration matters.
- We also have 8 bedspaces in our dispersed accommodation where women share a house with one other a woman or a woman with 1 child.

Referrals

- Overall, it is safer for women fleeing abuse to be rehoused outside of Derby if they are fleeing Derby.
- If you have access to Routes to Support, you can check if there are any vacancies in Derby.
- Otherwise, you can ring the Refuge on **07725245383** to find out if there is space and to discuss your referral.
- You will be asked to complete a brief referral form which will give us enough information to carry out the necessary referral work to ascertain if it is safe for the woman and her children if she has them to be accommodated with us.
- We aim to deal with all referrals within 24 hours and give you an outcome.
- You can email the refuge team on derby@refuge.org.uk

How support is offered

- Work in partnership with other professionals to meet the needs of survivors e.g., police, Social Care, housing, courts, Liaising/support with the police, probation etc.
- Emotional & practical, support
- Support at appointments and court
- Empowering to meet own needs
- Support and safety planning
- Weekly key work sessions
- House meetings.



Thank you



Refuge is committed to a world where domestic abuse is not tolerated or ignored and where women and children can live in safety.

**Domestic abuse is a crime.
It is against the law.
And it must not be ignored.**

www.refuge.org.uk

Photographs©: Julian Nieman