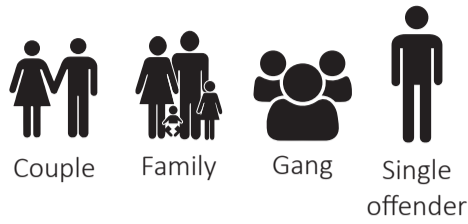


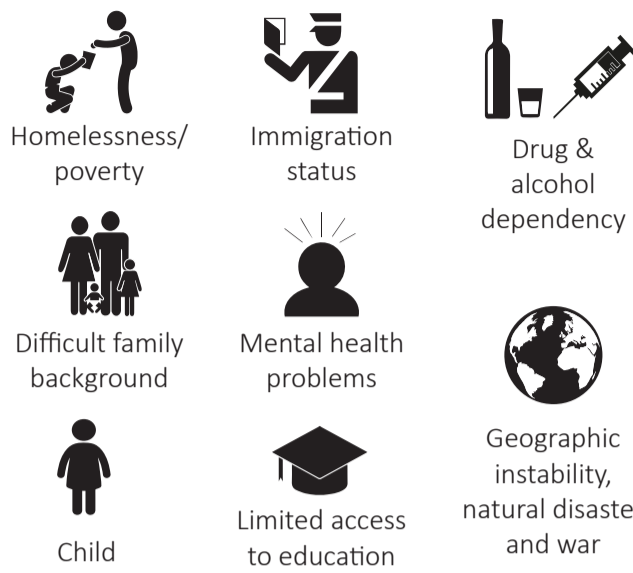
THERE IS NO ONE TYPE OF MODERN SLAVERY

ORGANISATION & ROLES

Victims and offenders often share the same nationality



VICTIM VULNERABILITIES



RECRUITMENT

Victims may be forced, coerced or deceived into exploitation - this can be over time so that the victim does not realise they are being groomed



Depending on the size and level of organisation, offenders may have specific roles

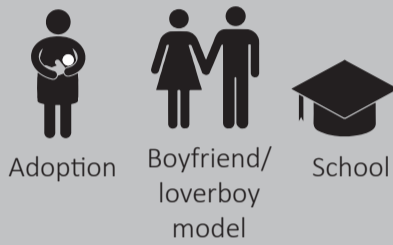


COERCION & CONTROL

Coercion may continue throughout exploitation as a method of control - explaining why victims remain in exploitative situations



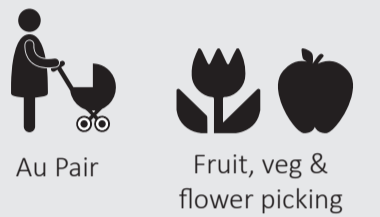
DECEPTION



Victims may travel to the UK with different expectations



Victims may be misled about their hours, wages, or living/working conditions



Victims may be misled about a job's nature, existence or legality

TRAVEL

Non-UK victims enter the UK legally, illegally or clandestinely. UK and non-UK victims will be moved around once in the UK
Victims may be exploited en route



LABOUR

Victims may work for offenders directly, or work for others



EXPLOITATION

CRIME

Victims are forced or coerced into criminal activities (e.g. begging, shoplifting, forced marriage)



SEXUAL

Victims can be forced, or appear willing to work in the sex industry, in a variety of locations



DOMESTIC SERVITUDE

Victims are forced to carry out household tasks - movement is likely to be restricted



5| The alpha victim is complicit in exploitation of others - their conditions may improve despite remaining a victim

1| Victim is recruited and exploited for the purpose of Modern Slavery

4| Offenders force or groom victims to carry out tasks, such as recruitment or control, towards other victims

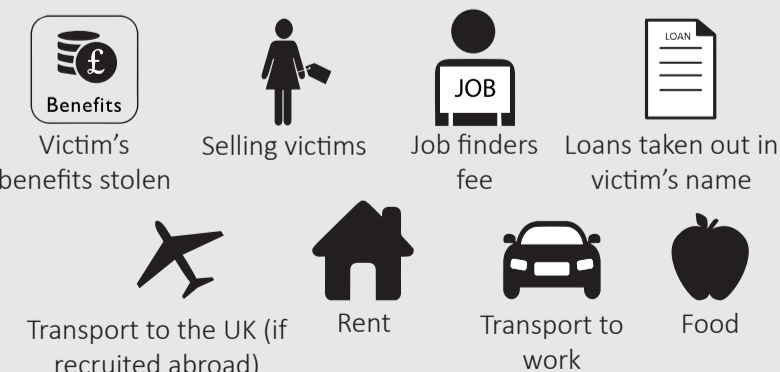
ALPHA VICTIMS

3| Offenders have increased trust in victim and allow them responsibility

2| Relationship is built between offenders and victims - this may be based on dependence

MONEY

Offenders charge victims for everyday items, to maximise their profits and build a debt to increase control over victims



SIGNS OF EXPLOITATION

